

TOTAL TANK

EMULSION STORAGE SYSTEMS

The Key to an Efficient Road Repair System



Portable

Electric Heat

1000 Gallon

Save Labor & Material Cost - Emulsion Mixture is Always Ready for your Road Repair Crew

Finally, there is an Automated Emulsion Storage System that is specially designed for proper storage and handling of asphalt emulsions. The **Total Tank Emulsion Storage System** by Warren Power Attachments gently heats and agitates emulsions to preserve their performance and ease of application.



Automated Agitation

Electric Heat

Gravity Feed System

Heated load Valves

3000 to 10,000 Gallon

- Agitator supported by 2" tapered roller bearings
- Tank roof coated with rubberized sealant
- Entire tank insulated with 3" foil backed high-density insulation
- Single weatherproof NEMA 3R enclosure protects electrical system

Automated Emulsion Storage System

STANDARD SYSTEM FEATURES:

- **Timed Agitator** - supported by 2" tapered roller bearings
- **Emulsion Temperature Gauge**
- **Float Gauging System**
- **Blanket Heaters** - six 1000w blanket heaters [220v] with thermostatic control
- **Enclosed Electrical Components** - protected within a single weather-proof NEMA 3R enclosure
- **Three Ball Valves** - three 3" ball valves for easier loading and unloading
- **Insulated Valves** - wrapped with 220v heat tape and protected by insulated metal cover
- **Carbon Steel Tank** - 1/4" carbon steel tank construction
- **Insulating Blanket** - 3" high-density foil-backed insulation with heat shield around entire tank keeps emulsion temperature even.
- **Outer Skin** - 0404 aluminum
- **Large Loader Hose** - fast loading with 7-foot long 3-inch diameter loader hose
- **Inspection Hatch** - interior inspection hatch on top side of system
- **Safety Cage** - safety cage on top of system
- **Ladder** - complete with safety cage
- **Access Port** - 24-inch round access port at base of system
- **Heavy-Duty Steel Stand** - provides sturdy tank support system
- **Optimum Gravity Flow Loading** - valves are 6' 6" above the ground surface for optimum gravity flow loading
- **Removal access** - easy access for servicing heating blankets

OPTIONAL SYSTEM FEATURES:

- **Stand Heights** - various stand heights available for special applications

SYSTEM SIZES:

- **3000 Gallon** - insulated tank size 8' 6" x 8' 6"
- **4000 Gallon** - insulated tank size 8' 6" x 11' 3"
- **5000 Gallon** - insulated tank size 8' 6" x 13' 10"
- **6000 Gallon** - insulated tank size 8' 6" x 16' 4"
- **Larger Tanks** - available upon request

SUGGESTED SYSTEM FOUNDATION:

- **Foundation Construction** - completely flat concrete pad
- **Lag Plates** - flush with concrete; 1/2"-thick steel ; 14-inches square
- **Concrete Area** - 12 feet square outside diameter; 12-inches thick; 1/2 rebar on 1-foot centers
- **For more information** - for more information and pad schematics, contact Total Patcher or your local distributor

CUSTOMER RESPONSIBILITIES:

- **Site Prep** - site and pad construction and preparation
- **Electrical** - final electrical hook-up of system
- **ADEM Requirements** - fulfillment of ADEM requirements
- **EPA Regulations** - fulfillment of EPA regulations

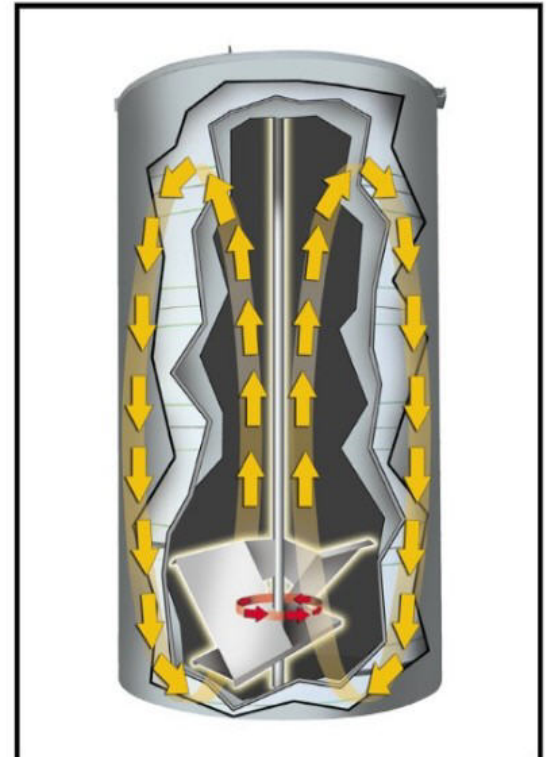
(Above specifications for vertical storage systems)



Insulated ball valves at the base of the tank gravity feed emulsion to the Total Patcher.



Electrical control panel and agitator timer is enclosed within a single weatherproof NEMA 3R enclosure.



The agitator rotates, moving the emulsion evenly and gently throughout the tank. The heaters keep the emulsion at the proper temperature, ready for use.

Total Patcher

4614 East 1000 North
Pittsboro, IN 46167

Toll Free 866-892-4737 Ph· 317-892-4737

info@totalpatcher.com

www.totalpatcher.com