



TOTAL PATCHER VORTEX

Total Patcher Vortex Features:

EMULSION TANK:

- **Size** – 250 U.S. Gallon; 12-inch filler cap for added safety and convenience
- **Working Pressure** – 200 psi @ 500° F pressure relief set from 100-110 psi
- **Insulation** – R-15 rating with a fire retardant fiber reinforced aluminum cover
- **Heat** – Two 1500w radiant heater blankets (120v) with thermostatic control

EMULSION LINE CLEAN OUT TANK:

- 15 U.S. gal pressure vessel rated at 200 psi @ 450° F pressure relief at 175 psi

ENGINE FUEL TANK:

- 18 ½ U.S. gallon tank steel fuel tank with quantity gauge

COMPRESSOR:

- Ultra high performance screw type compressor producing 60 cfm @ 100 psi 1800 RPM (maximum 150 psi) Has ¾ -inch 25-foot hose reel to run air tools

BLOWER:

- 450 cfm with 7 psi (14 potential) @ 1500 RPM, approx. 42 BHP. Mounted directly off engine flywheel (requires no belts or pulleys). Protective air pop-off valve set @ 10 psi. Normal operating temp under 230° F (max 275° F)

AIR CONVEYOR AGGREGATE FEED:

- Hopper box on patcher receives aggregate via a 5" dia flex hose from dump truck. Aggregate is injected into the air conveyor system via a low pressure suction created by a venturi (under the hopper box). Slide gate opens and closes by a 4" stroke air ram controlled through a 12v air solenoid valve activated by a remote switch located at the operator control handle. Aggregate ¼" - ½" in size is normally used. Machine will allow a 2 ½" stone to pass without clogging. Air solenoid has a manual override for ease of service.

AIR FILTERS:

- **Engine** – Paper element with vactuator valve in filter housing
- **Compressor** - Paper element with vactuator valve in filter housing
- **Blower** – Paper element with 300 inches in filtration surface with foam pre-cleaner

MOBILE HEATING SYSTEM:

- Engine coolant is routed through a high efficiency heat exchanger filled with heat exchange fluid. The heated fluid circulates via 12v circulation pump throughout the emulsion system, including the emulsion storage tank, hoses and spray nozzle. Average system temp is 140° F. The Total Patcher Vortex can effectively work down to ambient temp of 20° F (using proper emulsion for - those temps).

VENTED NOZZLE/SPRAY TIP:

- **Nozzle** - Light weight steel tube 3 ½" x 13" automatically pressure compensates to prevent blowing material out of target area. Promotes clean operation and precise control.
- **Spray tip** – Singular heated block with a precession laser cut 1"x .0625" inch slot for dispensing emulsion for 100% aggregate coating.

AGGREGATE HOSE:

- Aggregate travels the length of the machine via a 3 ½" ID schedule 40 pipe, then travels through 3 ½" ID rubber neoprene line hose (wire reinforced to prevent kinks). Hose is designed to provide super abrasion resistance.

EMULSION SUPPLY/DIESEL CLEAN-UP LINE:

- A 20' long x ½" ID hose rated @ 2,300 PSI carries the emulsion to the spray nozzle. Emulsion lines are encased in a heated insulated line packet to allow for cold weather operation. This line also serves as the clean-out line when patching operations are completed. Clean up takes about 1 quart of fluid

SWING HOSE CARRIER:

- **Easy Operation** – Free travel boom system supports the weight of the aggregate hoses. System allows an 18' working travel radius. All operators controls for throttle, emulsion and aggregate flow are located at the operator control handle.

TRAILER:

- **Frame** – 6" x 2" x ¼" Thick rectangular tube frame
 - **Axles** – Tandem 6,000 lb torsion bar for a 12,000 lb load capacity
 - **Tires** – Four ST235-80 R16; load range D; heavy-duty white modular 8 lug rims
 - **Brakes** – Four wheel electric with breakaway unit
 - **Lights** – Brake & tail, side marker, multi-directional/multi-pattern high intensity LED light stick, rear mounted strobe.
- Dimensions** – 96" wide x 91" high x 198" long
Weight – 5970 lb empty, 8170 lb loaded



Nozzle allows precise control of spray to target area.



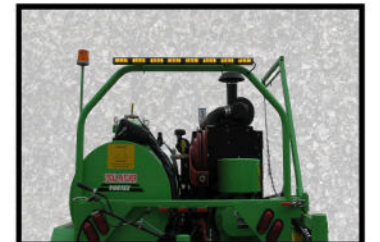
The hopper receives aggregate from the dump truck.



Optional Crack Seal Attachment good for sealing cracks before they become potholes.



25-Foot Hose Reel for air tools.



Standard Equipped LED light stick.

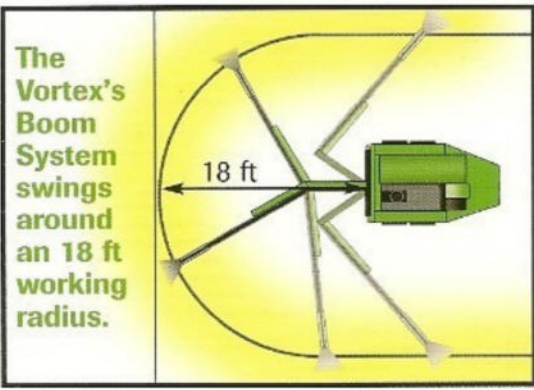
Specifications subject to change without notice.

**It's the Only Road Repair System
You'll Ever Need!**

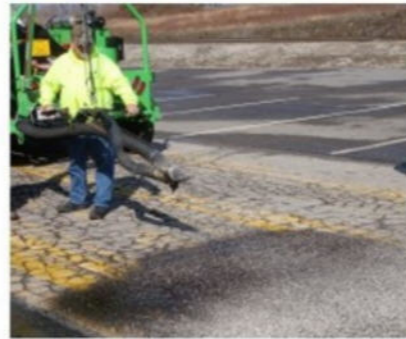
Total Patcher

4614 East 1000 North • Pittsboro, IN 46167
Toll Free: 866-892-4737 • Ph: 317-892-4737 • Fax: 317-892-5196
 info@totalpatcher.com • www.totalpatcher.com

Vortex All-in-One Gets It Done!



■ Street Patching



■ Alligator Cracking



■ Air Lance



■ Crack Sealing



■ Post Driver



■ Air Hammer

■ Free Travel Boom System

■ 60 CFM Air Compressor

BENEFITS/EASE OF OPERATION	
★	Produces 125 lb of mix per minute, 7500 lb per hour
★	Creates a permanent patch
★	Uses common emulsions
★	Low effort boom removes stress from operator
★	All weather nozzle design provides total control
★	Passes stones up to 2 1/2" without clogging
★	Mobile emulsion heating system
★	Operates air powered tools with ease

Meet the New and Improved Vortex Total Patcher Road Repair System

The **Vortex** is the workhorse of road repair and maintenance crews. In three simple steps, the **Vortex** enables a repair crew to quickly and efficiently create a **permanent patch** over potholes. Its **onboard air compressor** produces 60cfm @ 100 psi (maximum 150 psi) to run any mobile air tools on site!

With a simple switch of tools, the **Vortex** gets any job required done quickly and efficiently . . . from patching roads, sealing pavement cracks, driving sign post, and breaking up concrete, to cutting pavement . . . and more!

ECONOMICAL:

- Material cost is about 1/2 the cost of cold mix
- Repairs last for years
- Store materials on-site for **increased efficiency**
- **No other equipment necessary**= aggregate is supplied by your dump truck the Vortex does the rest!
- Produce **20 tons (or more)** of road repair patch daily

VORTEX WILL REPAIR:

- Potholes
- Alligator Cracks
- Shoulder Failures
- Utility Cuts
- Low Water Crossings
- Cracks (using crack seal attachment)
- Many other common road repairs

